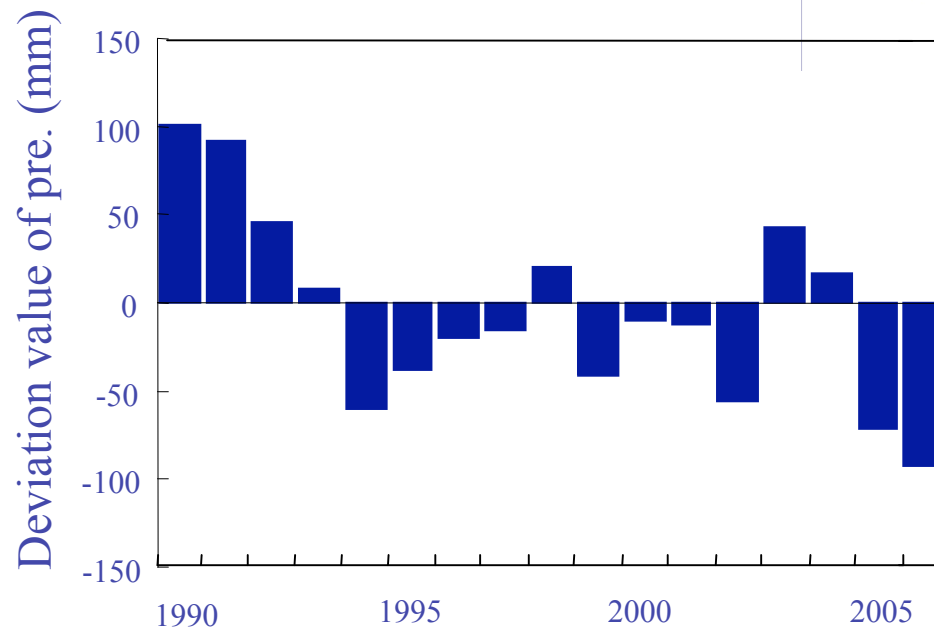
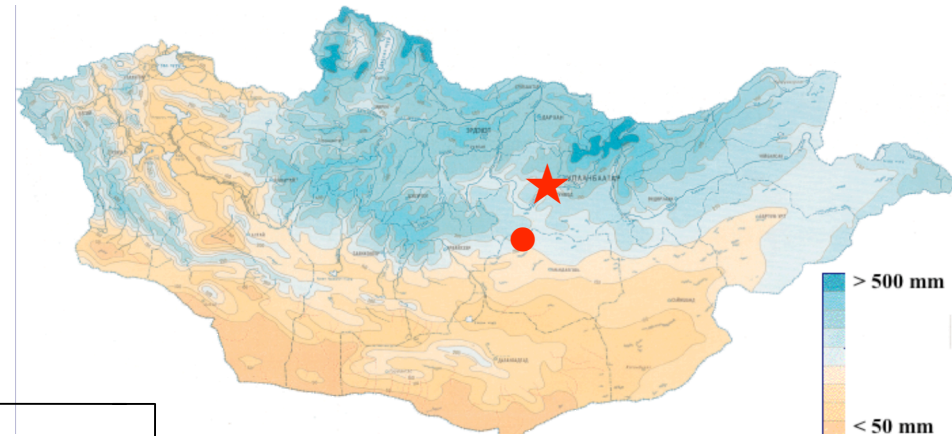




**Ecological Significance of Pastoral
Nomadism in the sustainability of
Mongolian grassland**

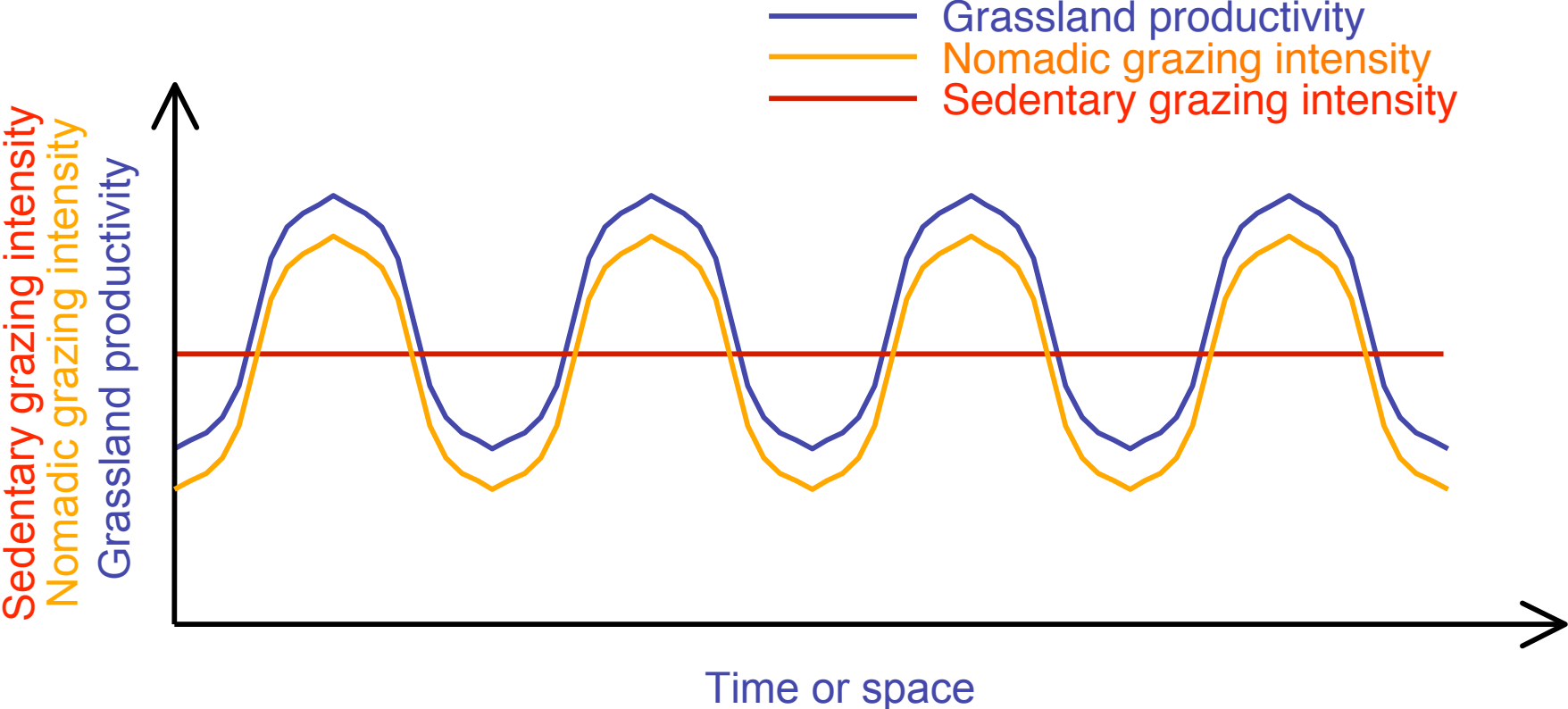
Study site: To'v province of Bayan-O'njuul

Vegetation: perennial gramineae dominated

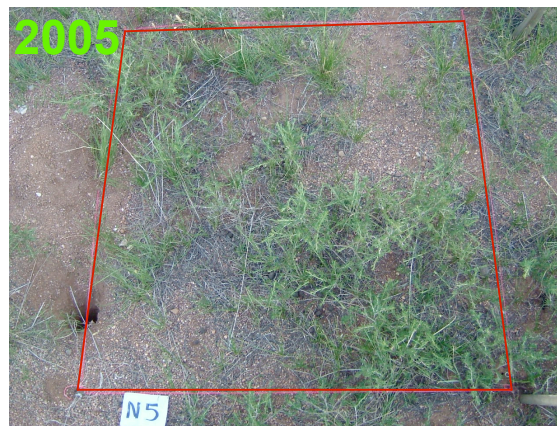
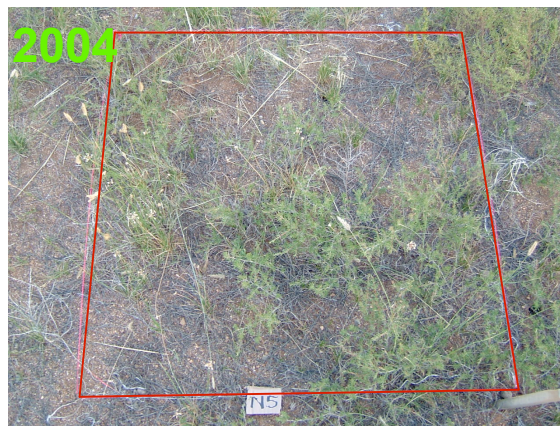


Precipitation: 180 mm
Coefficient of Variation:
30.7%

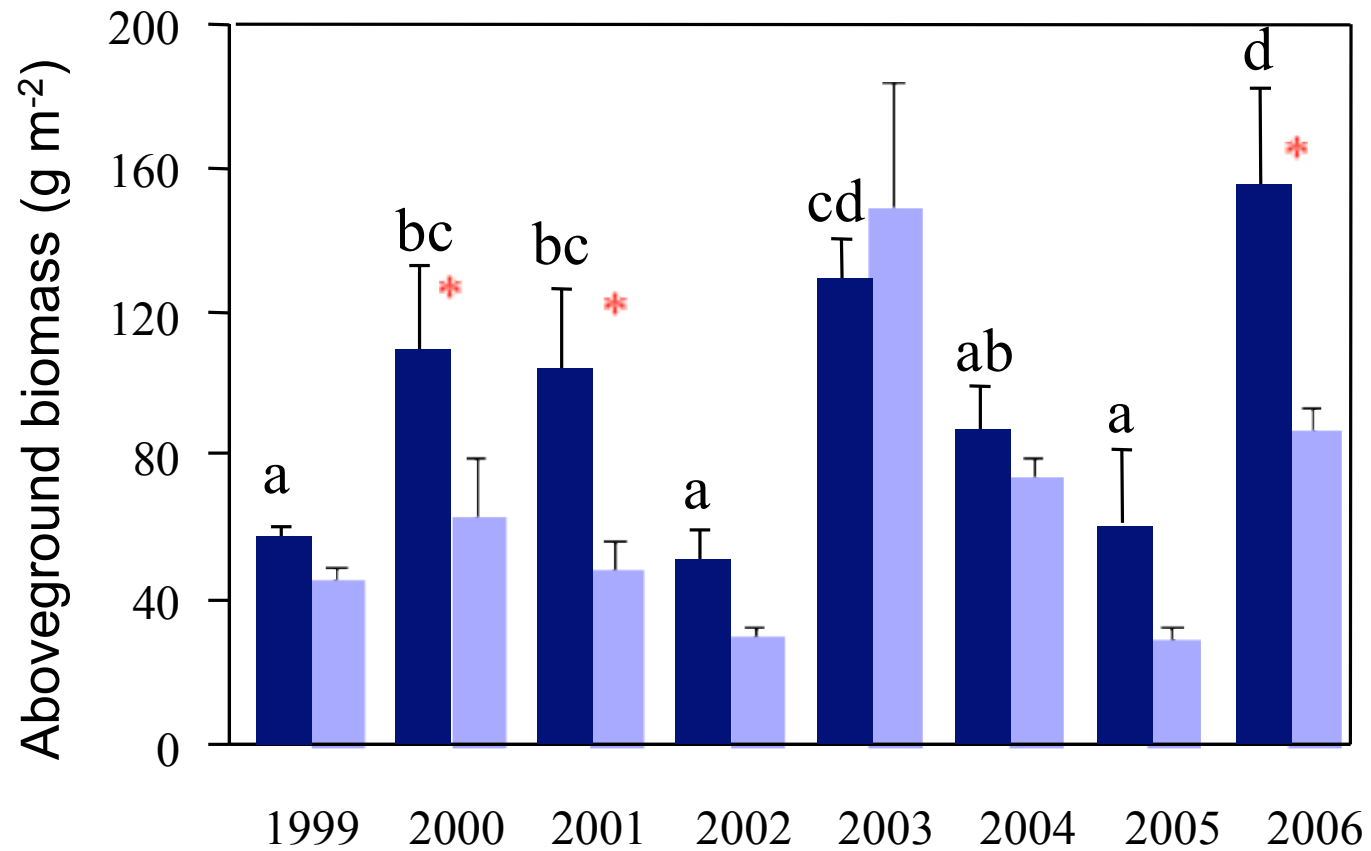
Model of the relationships between grassland productivity and grazing intensity



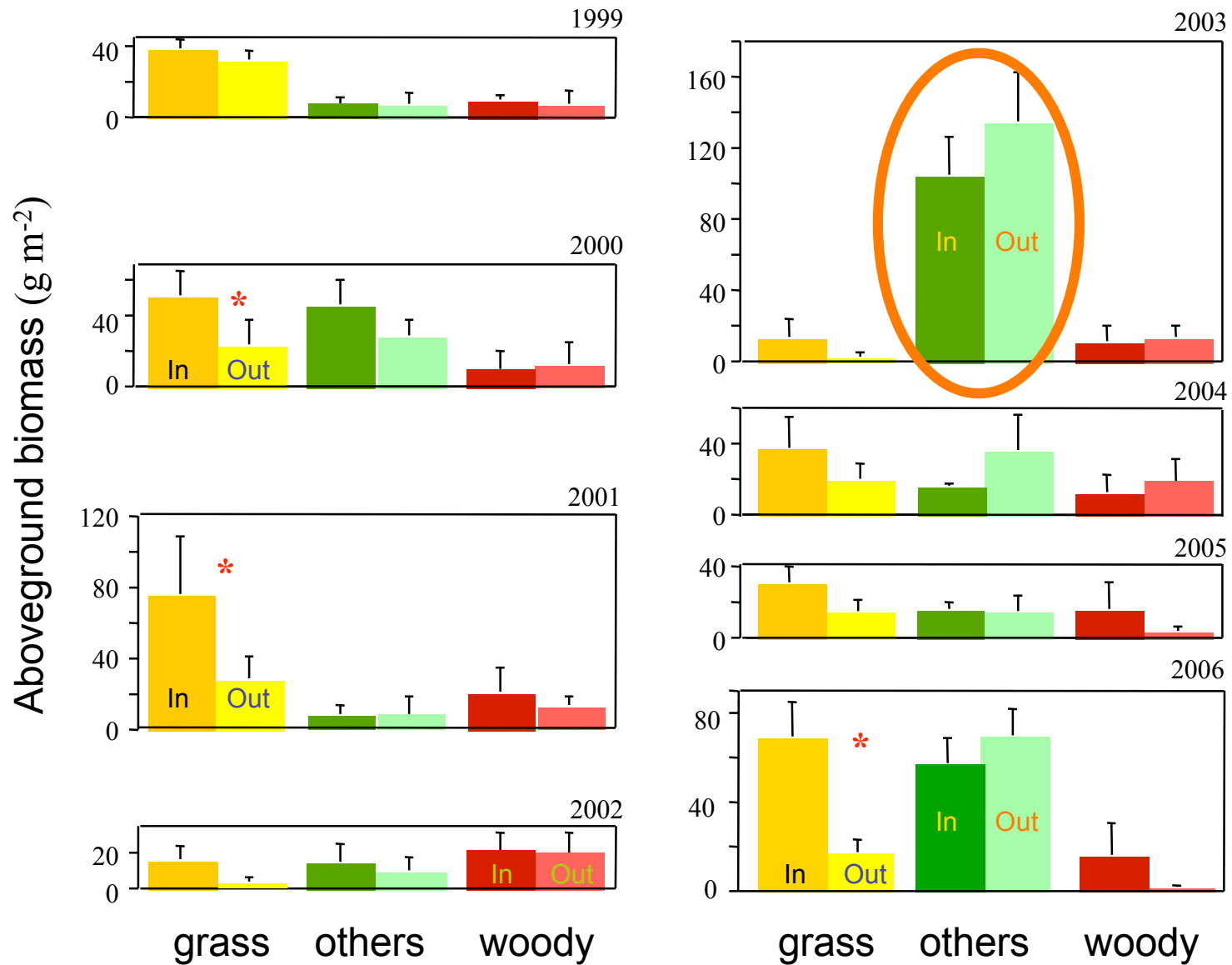
Changes of vegetation in the same plot.



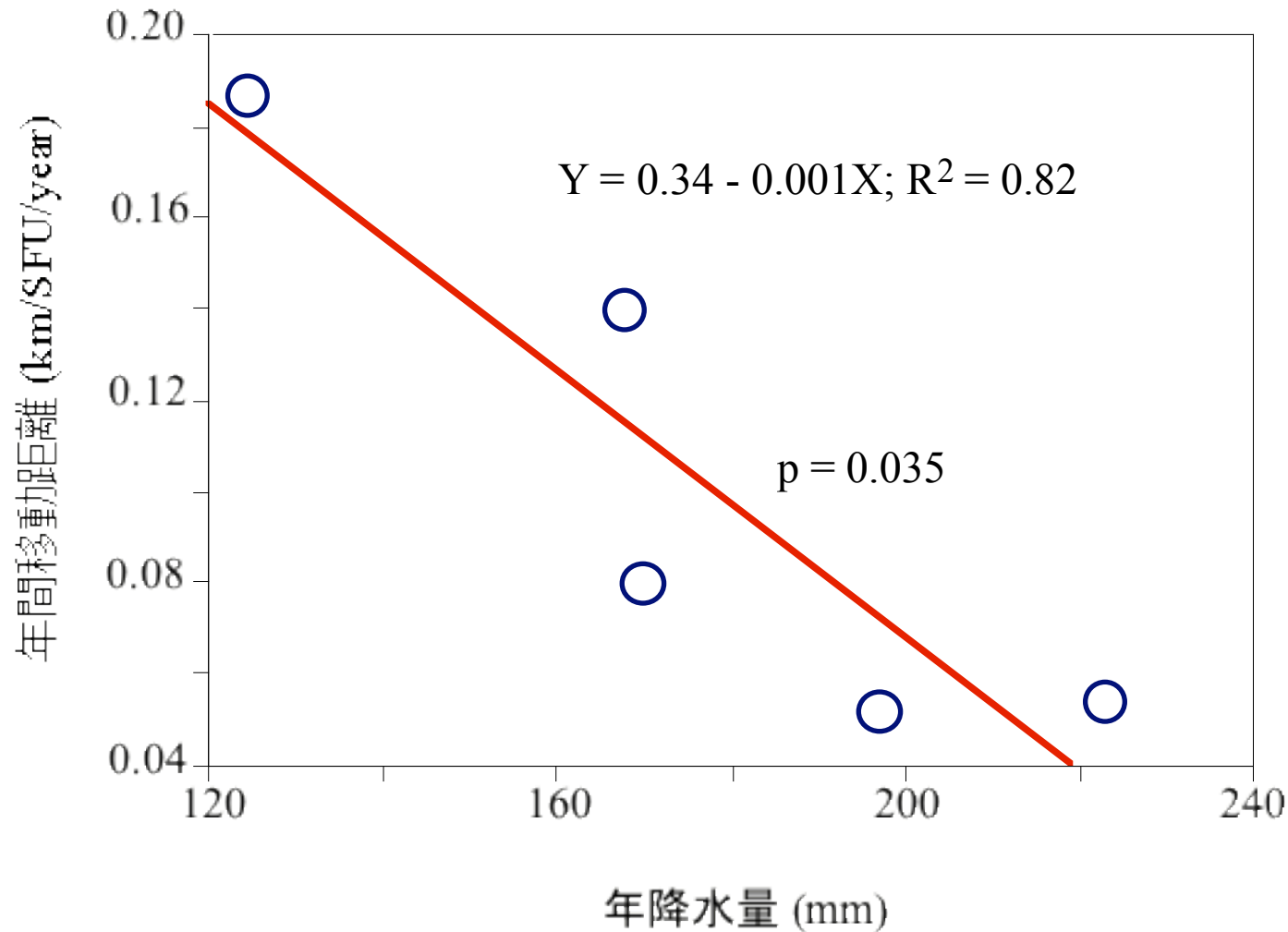
Aboveground biomass changes among years



Effects of climate and grazing on plant functional groups



Relationship between precipitation and pastoral moving distance (2001-2005)



Relationship between grazing intensity and grassland productivity

